

CITY OF NAPLES  
 UTILITIES DEPARTMENT

12" WATER MAIN REPLACEMENT  
 GULF SHORE BLVD. NORTH -  
 HORIZON WAY TO PARK SHORE DRIVE  
 APPROX. 2,800 FT.

PLAN SHEET INDEX:

1. COVER SHEET
2. GENERAL NOTES & INSTRUCTIONS
3. PLAN: STATION -00+21' TO 05+00'
4. PLAN: STATION 05+00' TO 12+00'
5. PLAN: STATION 12+00' TO 19+00'
6. PLAN: STATION 19+00 TO 26+00'
7. PLAN: STATION 26+00 TO 27+75' / LIST OF TAPS, BRANCHES, & DEFLECTIONS

DATE: APRIL 2013

**GENERAL NOTES & INSTRUCTIONS:**

1. ALL WATER MAIN AND PIPING FACILITIES SHALL BE CONSTRUCTED IN ACCORDANCE WITH THE CITY OF NAPLES STANDARD DETAILS AND SPECIFICATONS (LATEST UPDATE). THE MINIMUM COVER FOR ALL PROPOSED UTILITIES SHALL BE 30" UNLESS OTHERWISE INDICATED ON THE CONSTRUCTION PLANS OR APPROVED BY THE CITY UTILITY ENGINEER.
2. CONTRACTOR SHALL NOT EXCEED 75% OF THE MANUFACTURERS' RECOMMENDED MAXIMUM DEFLECTION WHEN DEFLECTING PIPE. FITTINGS MAY BE USED FOR PIPE ALIGNMENT CHANGES RATHER THAN DEFLECTING JOINTS AT THE CONTRACTOR'S EXPENSES.
3. CONTRACTOR SHALL KEEP A RECORD OF ALL CHANGES AND MAINTAIN AN AS-BUILT PLAN AT ALL TIMES. THIS PLAN WILL BE FURNISHED TO THE CITY UTILITY ENGINEER/PROJECT MANAGER, IMMEDIATELY AFTER PRESSURE TESTING IS COMPLETED, SO THAT STAFF CAN PREPARE AS-BUILTS FOR SUBMITTAL TO FDEP . THE CONTRACTOR SHALL ALSO NOTATE ALL OTHER UTILITIES LOCATED DURING EXCAVATION. THE CONTRACTOR SHALL OBTAIN GPS LOCATIONS OF NEW AND EXISTING UTILITIES DURING CONSTRUCTION AND PROVIDE THE GPS LOCATIONS IN A FORMAT COMPATIBLE WITH THE CITY'S GIS STANDARDS.
4. CONTRACTOR SHALL MAINTAIN EXISTING TRAFFIC/ACCESS, EXISTING DRAINAGE, & EXISTING UTILITIES DURING CONSTRUCTION.
5. ALL FINAL FITTING , PIPE, AND VALVE LOCATIONS TO BE APPROVED IN THE FIELD BY THE OWNER/UTILITY ENGINEER/PROJECT MANAGER.
6. THE LOCATION OF EXISTING UTILITIES AND FACILITIES HAS BEEN PREPARED FROM THE MOST RELIABLE INFORMATION AVAILABLE TO THE CITY. THE INFORMATION IS NOT GUARANTEED, THEREFORE THE CONTRACTOR SHALL VERIFY THE LOCATION AND ELEVATION OF ALL UTILITIES AND FACILITIES IN THE FIELD PRIOR TO THE START OF ANY CONSTRUCTION ACTIVITIES.
7. THE CONTRACTOR SHALL NOTIFY ALL UTILITY COMPANIES IN THE AREA 48 HOURS MINIMUM PRIOR TO START OF CONSTRUCTION, AND SHALL HAVE ALL SERVICE LINES (TELEPHONE, POWER , GAS, CABLE TV, WATER, SANITARY SEWER, FORCE MAINS, STORMWATER, IRRIGATION, & ANY OTHERS) LOCATED AND FLAGGED PRIOR TO EXCAVATION.
8. THE CONTRACTOR SHALL BE RESPONSIBLE FOR REPAIRING ALL UTILITY LINES AND SERVICES DAMAGED DURING CONSTRUCTION, INCLUDING IRRIGATION AND SERVICES. THE APPROPRIATE UTILITY SHALL BE NOTIFIED OF ALL DAMEAGED LINES& FACILITIES PRIOR TO REPAIRS. ALL NECESSARY REPAIRS SHALL BE PERFORMED IMMEDIATELY UPON DAMAGE OF THE LINE OR FACILITY.
9. ALL PAVING, STABILIZED EARTH, DRIVEWAYS, CURBS, SIDEWALKS, SOD, LANDSCAPING, SIGNS, MAIL BOXES, GRASS, FENCING, ETC.; DAMAGED OR REMOVED BY THE CONTRACTOR'S OPERATIONS, SHALL BE RESTORED TO A CONDITION EQUIVALENT TO PRECONSTRUCTION OR BETTER CONDITION; UNLESS OTHERWISE APPROVED BY THE UTILITY ENGINEER/PROJECT MANAGER/OWNER.
10. ALL ELEVATIONS SHALL BE BASED ON NORTH AMERICAN VERTICAL DATUM (NAVD).
11. THE CONTRACTOR IS REQUIRED TO OBTAIN WRITTEN APPROVAL FROM THE UTILITY ENGINEER/PROJECT MANAGER/OWNER FOR ANY DEVIATIONS FROM THE PLANS AND/OR SPECIFICATIONS.
12. THE CONTRACTOR SHALL FIELD VERIFY ALL DIMENSIONS AND ELEVATIONS PRIOR TO COMMENCEMENT OF CONSTRUCTION AND NOTIFY THE UTILITY ENGINEER IMMEDIATELY OF ANY REQUIRED PLAN DEVIATIONS.
13. THE CONTRACTOR SHALL BE RESPONSIBLE FOR OBTAINING A DEWATERING PERMIT FROM THE SOUTH FLORIDA WATER MANAGEMENT DISTRICT AS REQUIRED (IF APPLICABLE). NO EXTRA COMPENSATION FOR DEWATERING WILL BE ALLOWED.
14. THE CONTRACTOR SHALL BE RESPONSIBLE FOR OBTAINING A RIGHT OF WAY PERMIT FROM THE LOCAL AUTHORITY AS REQUIRED, IF APPLICABLE.
15. THE CONTRACTOR SHALL BE RESPONSIBLE FOR MAINTAINING TRAFFIC AND USAGE OF THE EXISTING STREETS/PROPERTIES ADJACENT TO THE PROJECT AREA AT ALL TIMES. ALL TRAFFIC MAINTENANCE CONTROL SHALL BE IN ACCORDANCE WITH THE FDOT ROADWAY AND TRAFFIC DESIGN STANDARDS, INDEX 600 SERIES. CONTRACTOR SHALL SUBMIT AN APPROVED MAINTENANCE OF TRAFFIC PLAN TO TH E OWNER/UTILITY ENGINEER PRIOR TO CONSTRUCTION.
16. ALL UTILITY CONNECTIONS SHALL CONFORM TO THE STANDARDS AND REQUIREMENTS OF THE AGENCY HAVING JURISDICTION OF EACH INDIVIDUAL UTILITY LINE.
17. THE CONTRACTOR SHALL MINIMIZE THE WORK AREA OF THE TRENCHES TO AVOID DISTURBANCES OF NATURAL VEGETATION. SPOIL FROM TRENCHES SHALL BE PLACED ONLY ON PREVIOUSLY CLEARED AREAS, EXISTING RIGHT-OF-WAY, OR APPROVED EASEMENT. THE CONTRACTOR SHALL NOT REMOVE OR DISTURB ANY TREES OR SHRUBS WITHOUT PRIOR APPROVAL FROM THE OWNER/UTILITY ENGINEER/PROJECT MANAGER.
18. THE 30" MINIMUM COVER REQUIREMENT FOR THE PROPOSED WATER & REUSE LINE IMPROVEMENTS SHALL BE MEASURED FROM FINISHED GRADES. IT IS THE CONTRACTOR'S RESPONSIBILITY TO INSURE MINIMUM COVER REGARDLESS OF EXISTING GRADE PERIODIC CHECKS (MIN. EVERY 200FT) FOR MINIMUM COVER SHALL BE MADE BY THE CONTRACTOR AND RECORDED ON THE RECORD DRAWINGS.
19. ALL MECHANICAL FITTINGS SHALL BE RESTRAINED WITH MEGA-LUG OR APPROVED. ALL FLANGED FITTINGS SHALL HAVE MIN. 1/16" RUBBER GASKETS AND STAINLESS STEEL HARDWARE.
20. ALL IN-LINE VALVES SHALL BE MAIN SIZED MECHANICAL JOINT AND RESTRAINED WITH MOLDED FLANGE ADAPTOR WITH STEEL RETAINING RING AS SUPPLIED BY THE MANUFACTURER. THE VALVES SHALL BE RESILIENT SEAT GATE VALVES WITH 2" DRIVER NUT AS PER CITY STANDARDS.
21. THE CONTRACTOR SHALL NOTIFY RESIDENCES AND BUSINESSES AT LEAST 48 HOURS IN ADVANCE OF ANY DISRUPTION OF SERVICE, INCLUDING DRIVEWAY CUTS.
22. THE ACCEPTANCE OF THE WATER MAIN SHALL BE SUBJECT TO FLUSHING, PRESSURE TEST, AND BATERIAL CLEARANCES.
23. CONTRACTOR IS ADVISED TO VISIT THE PROJECT CONSTRUCTION AREA PRIOR TO SUBMITTING THEIR PROPOSAL. THE PROPOSAL SHALL BE FINAL AND ACKNOWLEDGES THAT CONTRACTOR IS FAMILIAR WITH EXISTING SITE CONDITIONS.
24. WORK HOURS SHALL BE BETWEEN 7:00 A.M. AND 7:00 P.M., MONDAY THROUGH FRIDAY. WORK OUTSIDE OF THESE HOURS SHALL BE APPROVED AT THE SOLE DISCRETION OF THE CITY OF NAPLES. CONNECTIONS TO EXISTING WATER MAINS TO BE MADE DURING LOW FLOW PERIOD AND MUST BE COORDINATING WITH UTILITY DEPARTMENT.
25. THE CONTRACTOR SHALL PERFORM A PHOTO AND/OR VIDEO LOG OF THE ENTIRE PROJECT CONSTRUCTION AREA PRIOR TO ANY CONSTRUCTION ACTIVITIES. THIS LOG WILL ENSURE RESTORATION ACTIVITIES AND AID IN RESOLVING ANY CONFLICTS THAT MAY ARISE.
26. THE CONTRACTOR SHALL SUPPLY ALL PIPING, FITTINGS, AND WATER MAIN ASSOCIATED MATERIALS. THE CONTRACTOR SHALL SUPPLY ALL MATERIALS & SUPPLIES NECESSARY FOR THE INSTALLATION OF THE SPECIFIED WATER LINE/CONNECTIONS AND ALL RESTORATION ACTIVITIE.S
27. ALL WATER MAIN PIPING SHALL BE C-900 PVC PIPE (BLUE) DR-14 TO BE USED THROUGHOUT ENTIRE PROJECT; UNLESS OTHERWISE NOTED ON THE PLANS OR INSTRUCTED BY THE UTILITY ENGINEER/PROJECT MANAGER.
28. THE CONTRACTOR SHALL INSTALL A TRACER WIRE (1030P-HS BY COPPERHEAD) ALONG THE ENTIRE LENGTH OF THE WATER MAIN, ADDITIONAL WATER CONNECTIONS, AND ANY WATER METER SERVICE DROPS. THIS TRACER WIRE SHALL BE INSTALLED AT THE TOP-DEAD CENTER OF THE PIPE AND HELD IN PLACE WITH A PIECE OF DUCT TAPE (SUPPLIED BY CONTRACTOR). DROOPING OR MIS-ALIGNMENT OF THE TRACER WIRE IS NOT ACCEPTABLE. A 6" LOOP SHALL BE PROVIDED AT EACH SERVICE CONNECTION/TAP SO THAT THE TRACER WIRE WILL BE SPLICED FROM THE MAIN TRACER WIRE TO THE SERVICE TRACER WIRE; WITH A 78B MIN. SELF-SEALING WIRE NUT. A 18" TO 24" LOOP OF TRACER WIRE SHALL BE LEFT IN EACH METER BOX AND CAPPED WITH A WIRE CONNECTOR. LOCATOR BALLS SHALL BE PLACED AT THE BEGINNING AND END OF EACH MAIN LINE DEFLECTION; AT EACH TAP; AND AT EACH BRANCH LINE.
29. THE CONTRACTOR SHALL ACCURATELY LOG ALL ELEVATIONS & DIMENSIONS OF ALL DEFLECTIONS, TAPS, & BRANCHES ON THE PLANS PRIOR TO BACKFILL.
30. ANY TIME STRUCTURES, CURBS, AND/OR DRIVES THAT ARE UNDERMINED OR DISTURBED DURING PROJECT INSTALLATIONS; THE CONTRACTOR SHALL PROVIDE PROPER COMPACTION TO WITHIN 12" OF FINISH GRADE. FLOWABLE FILL SHALL USED TO STABILIZE THE REMAINDER OF THE EXCAVATION TO FINAL FINISH GRADE. THE CONTRACTOR SHALL REPAIR/REPLACE ANY FACILITIES DAMAGED DURING THE PROJECTS EXCAVATIONS.
31. **REQUIRED CLEARANCES:** CONTRACTOR SHALL MAINTAIN A MINIMUM 3 FEET HORIZONTALLY FROM STORMWATER AND 6' FROM SEWER FORCE MAIN/GRAVITY LINES AND 12 INCHES VERTICALLY; OTHERWISE NOTIFY UTILITY ENGINEER/PROJECT MANAGER IMMEDIATELY. REFER TO CROSS-OVER DETAIL IN CITY STARDARD SPECIFICATIONS AND DETAIL MANUAL FOR RESOLUTION.
32. SHEET 7 OF THIS DRAWING SET INCLUDES A LIST OF KNOWN TAPS, BRANCHES, AND DEFLECTIONS. THIS LIST IS TO ASSIST THE CONTRACTOR IN THEIR INVESTIGATIONS AND SHALL NOT BE ASSUMED TO INCLUDE ALL REQUIRED DEFLECTIONS. EXISTING UTILITIES AS SHOWN ARE APPROXIMATE LOCATIONS AND HAVE NOT BEEN FIELD VERIFIED. THE EXISTING UTILITIES SHOWN AND LISTED ABOVE SHALL NOT BE CONSTRUED AS BEING ALL INCLUSIVE OF UTILITIES IN THE AREA. ANY INTERRUPTION OF SERVICE SHALL BE COORDINATED WITH THE OWNER OF THE UTILITY.

**SPECIAL NOTES TO CONTRACTOR:**

IT IS THE LAW IN FLORIDA: 2 BUSINESS DAYS BEFORE YOU DIG - CALL SUNSHINE 1-800-432-4770. (811)\*\* CONTRACTOR SHALL PRE-MARK PROPOSED WORK AREA WITH WHITE PAINT PRIOR TO REQUESTING LOCATIONS AS REQUIRED BY STATUTE.

**SEE WESTON & SAMPSON DRAWINGS FOR PROJECT SURVEY DATA.**

FILE NO.

SHEET 2 OF 7  
DATE: APRIL 2013

CITY OF NAPLES - UTILITIES DEPARTMENT

12" WATER MAIN INSTALLATION - GULF SHORE BLVD N.  
(HORIZON W TO PARK SHORE DR.) [APPROX 2,800 LF]



UTILITIES DEPARTMENT

DRAWN BY: DAG

CHECKED BY: \_\_\_\_\_  
APPROVED BY: \_\_\_\_\_

REVISION

DATE

**LEGEND**

--- EXISTING WATER LINES  
 — PROPOSED WATER LINES

NEW 2" POLY SERVICE LINE. REDUCE TO METER SIZE IF REQUIRED. CAP/PLUG OLD LINE.

DEFLECT NEW WM UNDER SANITARY LATERAL IF REQUIRED.

INSTALL NEW 12" X 2" TAPPING SADDLE, CORP&CURB VALVES, AND NEW 2" POLY SERVICE LINE. REDUCE TO METER SIZE IF REQUIRED. CAP/PLUG OLD LINE.

INSTALL NEW 12" X 6" BRANCH TEE, 6" RS GATE VALVE, AND ALL NECESSARY FITTINGS TO CONNECT TO EXISTING 6" FIRE LINE TO CONDO. CAP/PLUG OLD LINE.

INSTALL NEW 12" X 6" BRANCH TEE, 6" RS GATE VALVE, AND ALL NECESSARY PIPE & FITTINGS TO CONNECT TO EXISTING CONDO METER INSTALLATIONS. REMOVE, CAP, &/OR PLUG ABANDONED LINE.

INSTALL NEW 12" X 2" TAPPING SADDLE, CORP&CURB VALVES, AND NEW 2" POLY SERVICE LINE. REDUCE TO METER SIZE IF REQUIRED. CAP/PLUG OLD LINE.

INSTALL NEW 12" X 6" BRANCH TEE, 6" RS GATE VALVE, AND ALL NECESSARY PIPE FITTINGS TO CONNECT TO EXISTING 6" FIRE LINE TO CONDO. CAP, &/OR PLUG ABANDONED LINE.

DEFLECT NEW WM UNDER SANITARY LATERAL IF REQUIRED.

DEFLECT NEW WM UNDER STORM LINE AND (SANITARY LATERAL IF REQUIRED).

INSTALL NEW 12" X 6" BRANCH TEE, 6" RS GATE VALVE, AND ALL NECESSARY FITTINGS TO CONNECT TO EXISTING 6" SERVICE LINE TO CONDO. CAP, &/OR PLUG ABANDONED LINE.

INSTALL NEW 12" X 2" TAPPING SADDLE, CORP&CURB VALVES, AND NEW 2" POLY SERVICE LINE. REDUCE TO METER SIZE IF REQUIRED. CAP/PLUG OLD LINE.

INSTALL NEW 12" X 2" TAPPING SADDLE, CORP&CURB VALVES, AND NEW 2" POLY SERVICE LINE. REDUCE TO METER SIZE IF REQUIRED. CAP/PLUG OLD LINE.

POSSIBLE DEFLECTION OF 12" WM REQUIRED FOR FPL FEEDER. CONTRACTOR TO VERIFY.

PROVIDE PROPER PIPING AND FITTINGS FOR FULL BORE FLUSH AND PRESSURE TEST. UPON ACCEPTANCE; INSTALL 12" TEE, 12" X 6" REDUCERS, AND 6" RS GATE VALVES FOR CONNECTIONS TO EXISTING 6" WMS.

CAP AND GROUT EX. WM AFTER NEW WM IS ACCEPTED AND IN SERVICE.

CAP OR GROUT EX. WM

**BEGIN PROJECT -00+21'**

**MATCH LINE: STATON 05-00'**

LE CIEL VENETIAN TOWER CONDO

CASA MAR LN

HORIZON HOUSE CONDO

GULF SHORE BLVD N

VENETIAN COVE CLUB CONDO

HORIZON WAY

CITY OF NAPLES - UTILITIES DEPARTMENT

**12" WATER MAIN INSTALLATION - GULF SHORE BLVD N.  
 (HORIZON W TO PARK SHORE DR.) [APPROX 2,800 LF]**

FILE NO.

SHEET 3 OF 7  
 DATE: APRIL 2013



UTILITIES DEPARTMENT

DATE	REVISION	APPROVED BY	CHECKED BY

DRAWN BY: DAG



**LEGEND**

--- EXISTING WATER LINES  
 — PROPOSED WATER LINES

CAP AND GROUT EX. WM  
 SHUT EX. 6" VALVE CLOSED, PLUG/CAP VALVE, AND REMOVE VALVE BOX  
 EX. VALVE ON EX. WM LOOP  
 FIRE SERVICE

INSTALL NEW 12" X 6" BRANCH TEE, 6" RS GATE VALVE, AND ALL NECESSARY FITTINGS TO CONNECT TO EXISTING 6" FEEDING FIRE SERVICE LINE. CAP/PLUG OLD LINE.

DEFLECT NEW WM UNDER STORM LINE

INSTALL NEW 12" X 8" BRANCH TEE, 8" RS GATE VALVE, AND ALL NECESSARY FITTINGS TO CONNECT TO EXISTING 8" FEEDING FIRE AND METER SERVICE LINES. CAP/PLUG OLD LINE.

DEFLECT NEW WM UNDER SANITARY LATERAL IF REQUIRED.

INSTALL NEW 12" X 2" TAPPING SADDLE, CORP&CURB VALVES, AND NEW 2" POLY SERVICE LINE. REDUCE TO METER SIZE IF REQUIRED. CAP/PLUG OLD LINE.

INSTALL NEW 12" X 6" BRANCH TEE, 6" RS GATE VALVE, AND ALL NECESSARY FITTINGS TO CONNECT TO EXISTING 6" SERVICE LINE TO CONDO. CAP/PLUG OLD LINE.

DEFLECT NEW WM UNDER STORM LINE

INSTALL NEW 12" X 2" TAPPING SADDLE, CORP&CURB VALVES, AND NEW 2" POLY SERVICE LINE. REDUCE TO METER SIZE IF REQUIRED. CAP/PLUG OLD LINE.

DEFLECT NEW WM UNDER SANITARY LATERAL IF REQUIRED.

INSTALL NEW 12" X 2" TAPPING SADDLE, CORP&CURB VALVES, AND NEW 2" POLY SERVICE LINE. REDUCE TO METER SIZE IF REQUIRED. CAP/PLUG OLD LINE.

INSTALL NEW 12" X 6" BRANCH TEE, 6" RS GATE VALVE, AND ALL NECESSARY FITTINGS TO CONNECT TO EXISTING 6" FIRE LINE TO CONDO. CAP/PLUG OLD LINE.

INSTALL NEW 12" X 6" BRANCH TEE, 6" RS GATE VALVE, AND ALL NECESSARY PIPE & FITTINGS TO CONNECT TO EXISTING CONDO METER INSTALLATIONS. REMOVE, CAP, &/OR PLUG ABANDONED LINE.

INSTALL NEW 12" X 2" TAPPING SADDLE, CORP&CURB VALVES, AND NEW 2" POLY SERVICE LINE. REDUCE TO METER SIZE IF REQUIRED. CAP/PLUG OLD LINE.

INSTALL NEW 12" X 6" BRANCH TEE, 6" RS GATE VALVE, AND ALL NECESSARY PIPE FITTINGS TO CONNECT TO EXISTING 6" FIRE LINE TO CONDO. CAP, &/OR PLUG ABANDONED LINE.

**MATCH LINE: STATON 12-00'**

**MATCH LINE: STATON 05-00'**



FILE NO.  
 SHEET 4 OF 7  
 DATE: APRIL 2013

CITY OF NAPLES - UTILITIES DEPARTMENT

**12" WATER MAIN INSTALLATION - GULF SHORE BLVD N.  
 (HORIZON W TO PARK SHORE DR.) [APPROX 2,800 LF]**



UTILITIES DEPARTMENT

DATE	REVISION	APPROVED BY	CHECKED BY

DRAWN BY: DAG

**LEGEND**

--- EXISTING WATER LINES

— PROPOSED WATER LINES

4021

**MATCH LINE: STATON 19-00'**

FILE NO.

SHEET 5 OF 7  
DATE: APRIL 2013

THE BRITANNY  
CONDO

DEFLECT NEW WM UNDER STORM LINE & SANITARY LATERAL.  
INSTALL NEW 12" X 6" BRANCH TEE, 6" RS GATE VALVE, AND ALL NECESSARY FITTINGS TO CONNECT TO EXISTING 6" SERVICE LINE TO CONDO. CAP/PLUG OLD LINE.

DEFLECT NEW WM UNDER STORM LINE

INSTALL NEW 12" X 6" BRANCH TEE, 6" RS GATE VALVE, AND ALL NECESSARY FITTINGS TO CONNECT TO EXISTING 6" FIRE LINE TO CONDO. CAP/PLUG OLD LINE.

INSTALL NEW 12" X 8" BRANCH TEE, 8" RS GATE VALVE, AND ALL NECESSARY FITTINGS TO CONNECT TO EXISTING 8" FEEDING FIRE AND METER SERVICE LINES. CAP/PLUG OLD LINE.

POSSIBLE DEFLECTION OF 12" WM REQUIRED FOR FPL AND/OR GAS LINE. CONTRACTOR TO VERIFY.

8" VALVE AND LINE TO 8" METER TO CLUB BRITANNY

CONNECT TO EX. 8" WM WITH 8" VALVE



CITY OF NAPLES - UTILITIES DEPARTMENT

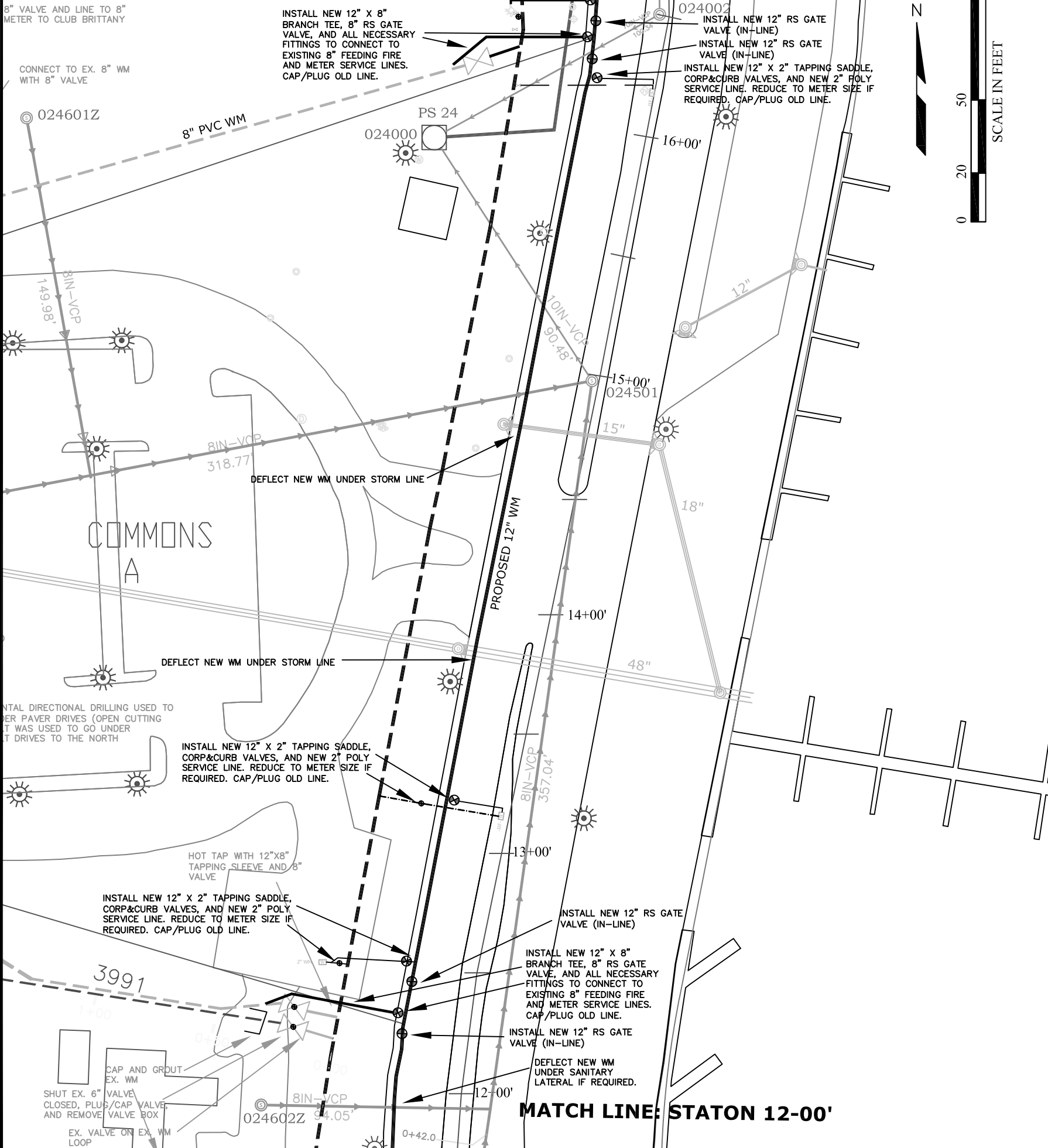
**12" WATER MAIN INSTALLATION - GULF SHORE BLVD N.  
(HORIZON W TO PARK SHORE DR.) [APPROX 2,800 LF]**

UTILITIES DEPARTMENT



CHECKED BY	DATE
APPROVED BY	DATE
REVISION	

DRAWN BY: DAG



**MATCH LINE: STATON 12-00'**

MATCH LINE: STATON 26-00'

FILE NO.  
SHEET 6 OF 7  
DATE: APRIL 2013

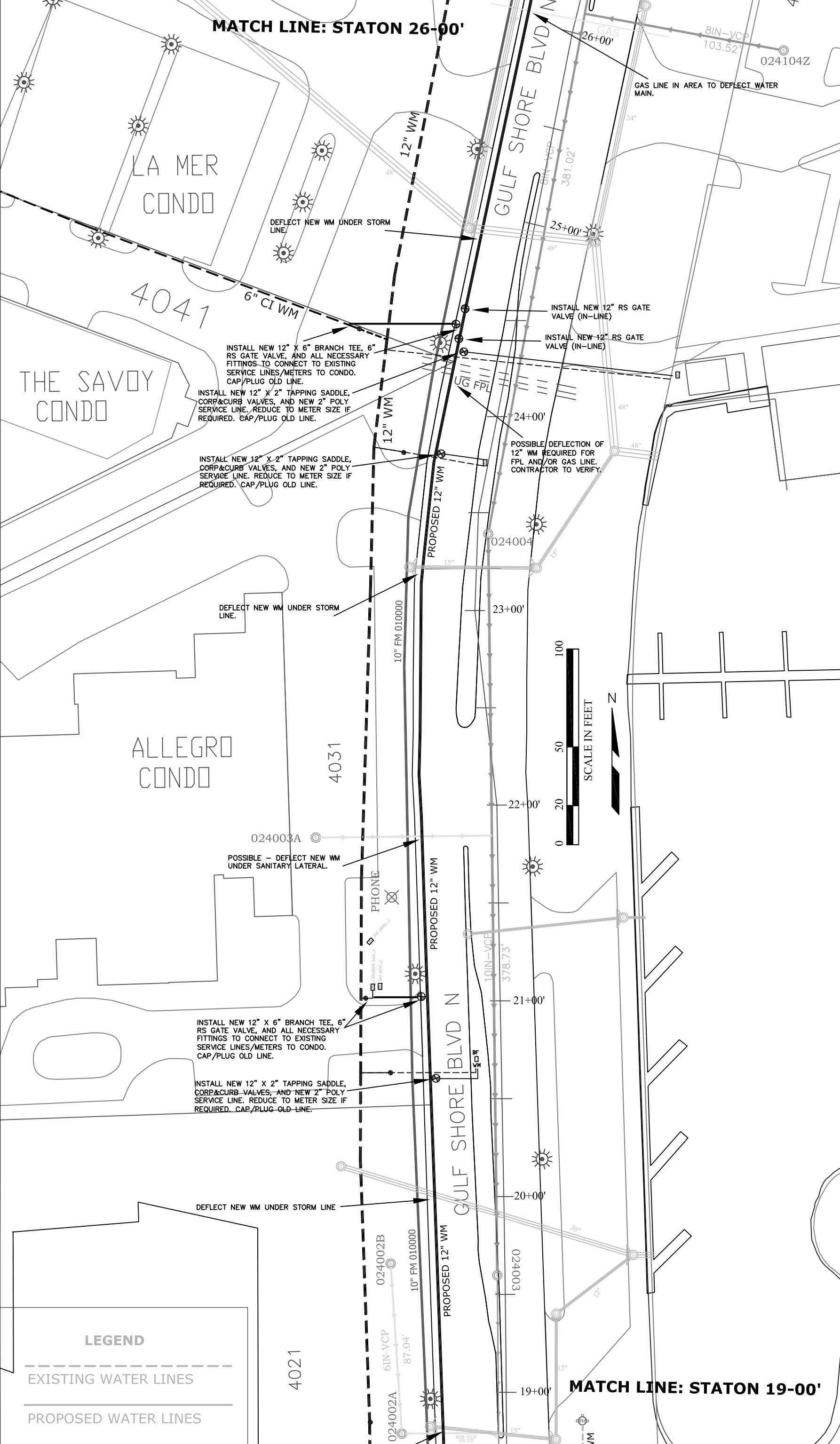
CITY OF NAPLES - UTILITIES DEPARTMENT

12" WATER MAIN INSTALLATION - GULF SHORE BLVD N.  
(HORIZON W TO PARK SHORE DR.) [APPROX 2,800 LF]



REVISION	APPROVED BY	DATE

DRAWN BY: DAG



**LEGEND**

---	EXISTING WATER LINES
—	PROPOSED WATER LINES

MATCH LINE: STATON 19-00'



# LIST OF PROJECT: TAPS, BRANCHES, DEFLECTIONS

#	STATION	DESCRIPTION	CODE
1	00-21'	12" TEE, 2 - 12"X6" RED, 2 - 6"RSGV: HORIZON CONNECTION	C
2	00+12'	12" WM POSSIBLE DEFLECTION FOR UGFPL: EST LOC.	PD
3	00+25'	12" X 2" TAP FOR WATER METER	TP
4	00+45'	12" X 2" TAP FOR WATER METER	TP
5	01+09'	12" X 6" BRANCH FOR FIRE LINE & WM	BR
6	02+40'	12" WM DEFLECTION FOR STORM LINE	D
7	03+45'	12" WM POSSIBLE DEFLECTION SANITARY SEWER LINE	PD
8	03+76'	12" X 6" BRANCH FOR FIRE LINE	BR
9	04+83'	12" X 2" TAP FOR WATER METER	TP
10	04+92'	12" X 6" BRANCH FOR FIRE LINE & MULTI-METERS	BR
11	05+06'	12" INLINE RSGV	GV
12	06+07'	12" X 6" BRANCH FOR FIRE LINE	BR
13	06+78'	12" X 2" TAP FOR WATER METER	TP
14	07+26'	12" WM POSSIBLE DEFLECTION SANITARY SEWER LINE	PD
15	07+80'	12" WM POSSIBLE DEFLECTION FOR UGFPL/GAS: EST LOC.	PD
16	07+93'	12" X 2" TAP FOR WATER METER	TP
17	08+04'	12" WM DEFLECTION FOR STORM LINE	D
18	08+24'	12" INLINE RSGV	GV
19	08+36'	12" X 6" BRANCH FOR FIRE LINE & MULTI-METERS	BR
20	09+09'	12" X 2" TAP FOR WATER METER	TP
21	09+17'	12" WM POSSIBLE DEFLECTION SANITARY SEWER LINE	PD
22	09+32'	12" X 8" BRANCH FOR FIRE LINE & MULTI-METERS	BR
23	11+15'	12" WM DEFLECTION FOR STORM LINE	D
24	11+71'	12" X 6" BRANCH FOR FIRE LINE	BR
25	11+94'	12" WM POSSIBLE DEFLECTION SANITARY SEWER LINE	PD
26	12+25'	12" INLINE RSGV	GV
27	12+34'	12" X 8" BRANCH FOR FIRE LINE & MULTI-METERS	BR
28	12+46'	12" INLINE RSGV	GV
29	12+55'	12" X 2" TAP FOR WATER METER	TP
30	13+19'	12" X 2" TAP FOR WATER METER	TP
31	13+80'	12" WM DEFLECTION FOR STORM LINE	D
32	14+26'	12" WM DEFLECTION FOR STORM LINE	D
33	16+25'	12" X 2" TAP FOR WATER METER	TP
34	16+33'	12" INLINE RSGV	GV
35	16+42'	12" X 8" BRANCH FOR FIRE LINE & MULTI-METERS	BR
36	16+48'	12" INLINE RSGV	GV
37	16+57'	12" X 6" BRANCH FOR FIRE LINE	BR
38	17+86'	12" WM DEFLECTION FOR STORM LINE	D
39	18+39'	12" WM DEFLECTION FOR UGFPL: EST LOC.	D
40	18+54'	12" X 6" BRANCH FOR FIRE LINE & MULTI-METERS	BR
41	18+82'	12" WM DEFLECTION FOR STORM LINE	D
42	20+00'	12" WM DEFLECTION FOR STORM LINE	D
43	20+60'	12" X 2" TAP FOR WATER METER	TP
44	21+02'	12" X 6" BRANCH FOR FIRE LINE & MULTI-METERS	BR
45	21+84'	12" WM POSSIBLE DEFLECTION SANITARY SEWER LINE	PD
46	23+23'	12" WM DEFLECTION FOR STORM LINE	D
47	23+81'	12" X 2" TAP FOR WATER METER	TP
48	24+20'	12" WM DEFLECTION FOR UGFPL: EST LOC.	D
49	24+31'	12" X 2" TAP FOR WATER METER	TP
50	24+41'	12" INLINE RSGV	GV
51	24+48'	12" X 6" BRANCH FOR WM LOOP	BR
52	24+56'	12" INLINE RSGV	GV
53	24+95'	12" WM DEFLECTION FOR STORM LINE	D
54	26+07'	12" WM DEFLECTION FOR UGGAS: EST LOC.	D
55	27+27'	12" WM POSSIBLE DEFLECTION SANITARY SEWER LINE	PD
56	27+77'	12" TEE CONNECTION TO EXISTING 12" WM	C

FILE NO.  
SHEET 7 OF 7  
DATE: APRIL 2013

CITY OF NAPLES - UTILITIES DEPARTMENT  
**12" WATER MAIN INSTALLATION - GULF SHORE BLVD N.  
(HORIZON W TO PARK SHORE DR.) [APPROX 2,800 LF]**



DRAWN BY: DAG	CHECKED BY:
	APPROVED BY:
	REVISION:
	DATE:

